



## Memo

To: Ministers, Clerks of Session, Commissioners, Alternate Commissioners and Visitors  
From: Matt Meinke, Stated Clerk  
Date: January 25, 2018  
Re: February Stated Meeting

---

### MEETING AT SANTA FE PRESBYTERIAN CHURCH, EDMOND Friday & Saturday, February 23-24, 2018

We look forward to seeing you at the February Stated meeting. Santa Fe Presbyterian Church, Edmond, located at 1603 N. Santa Fe Ave., Edmond Oklahoma, 73003-3661, will host this meeting. **You may register online at: [www.okinp.org/register](http://www.okinp.org/register) or complete the enclosed/attached registration form.**

**TO REQUEST AN EXCUSED ABSENCE:** Please complete the registration form (online/attached) and request to be excused. Be sure to state the reason you are requesting to be excused. Honorable retired ministers do not need to request an excused absence.

**CHILD CARE:** Please register for child care either online or on the enclosed registration form. Parents are expected to provide meals and snacks for their children.

**REGISTRATION FEE:** The registration fee is \$12.00 per person. You may pay online with PayPal, by check sent to the presbytery office, or by cash or check at check-in on Friday. **Remember, paying before the meeting allows you to avoid standing in line. You can pick up your nametag immediately and sign-in.**

**CHECK-IN:** Check-in on Friday begins at 12:30 p.m. Workshops begin at 1 p.m. See below for full schedule.

**EDUCATIONAL OPPORTUNITIES:** Workshops begin at 1:00 p.m. and more at 2:00 p.m. More information will be coming once presenters are finalized.

**COMMISSIONER INFORMATION:** The Stated Clerk will be available to assist new commissioners at 3:10 p.m.

**THE PACKET FOR THE BUSINESS MEETING:** An e-mail message will be sent to all members and commissioners when the business packet is available for download at [www.okinp.org](http://www.okinp.org). A copy of the Notice will be sent to all Ministers and Commissioners who do not have email.

***A limited number of printed packets will be available at the presbytery meeting. Call the office if you want a printed packet.***

#### **Friday, February 23rd**

12:30 p.m. - Check-in  
1:00 p.m. - Workshops I begin  
2:00 p.m. – Workshops II begin  
3:10 p.m. - Stated Clerk available to assist new commissioners  
3:30 p.m. - Meeting convenes  
5:00 p.m. - Dinner provided by host church  
8:00 p.m. - Recess till morning

#### **Saturday, February 24th**

8:15 a.m. - Coffee and light refreshments  
9:00 a.m. - Meeting reconvenes  
12:30 p.m. - Adjourn (time approx.)

**REGISTRATION DEADLINE IS FEBRUARY 19, 2018**



Dear Sisters and Brothers in Christ,

On behalf of the Session and congregation of Santa Fe Presbyterian Church, I am honored to welcome you all for the stated meeting of Indian Nations Presbytery on Friday and Saturday, February 23-24.

Santa Fe was the last New Church Development in Indian Nations Presbytery. Meetings began in July 1994 and the congregation was chartered March 17, 1996 with 150 members. We occupied our building in September of 1998. We work hard at fulfilling our vision to be "... an oasis of hope in Christ; come see, be fed, go tell," and trust that you find our hospitality to be warm and welcoming and filled with joy.

"We love as Christ loves and serve as Christ served," declares our mission statement, and to that end we strongly emphasize a fellowship of **Christ-like love** as we seek to live lives of **service and mission** (you will hear more about our mission outreach at the meeting). These values, along with our **relationship with the Triune God**, the authority of **Scripture**, our commitment to **Christian growth and learning**, and being rooted **in our Reformed heritage**, are the core of who we are at Santa Fe.

If you have never been to Santa Fe Presbyterian Church, we are located at 1603 N. Santa Fe Ave. in Edmond, about a third of a mile north of Danforth Ave. There is ample parking on the west, south and east sides of the building. Registration will be inside the main doors which are located on the east side (facing Santa Fe Ave.). Directions and maps will be attached to the business packet.

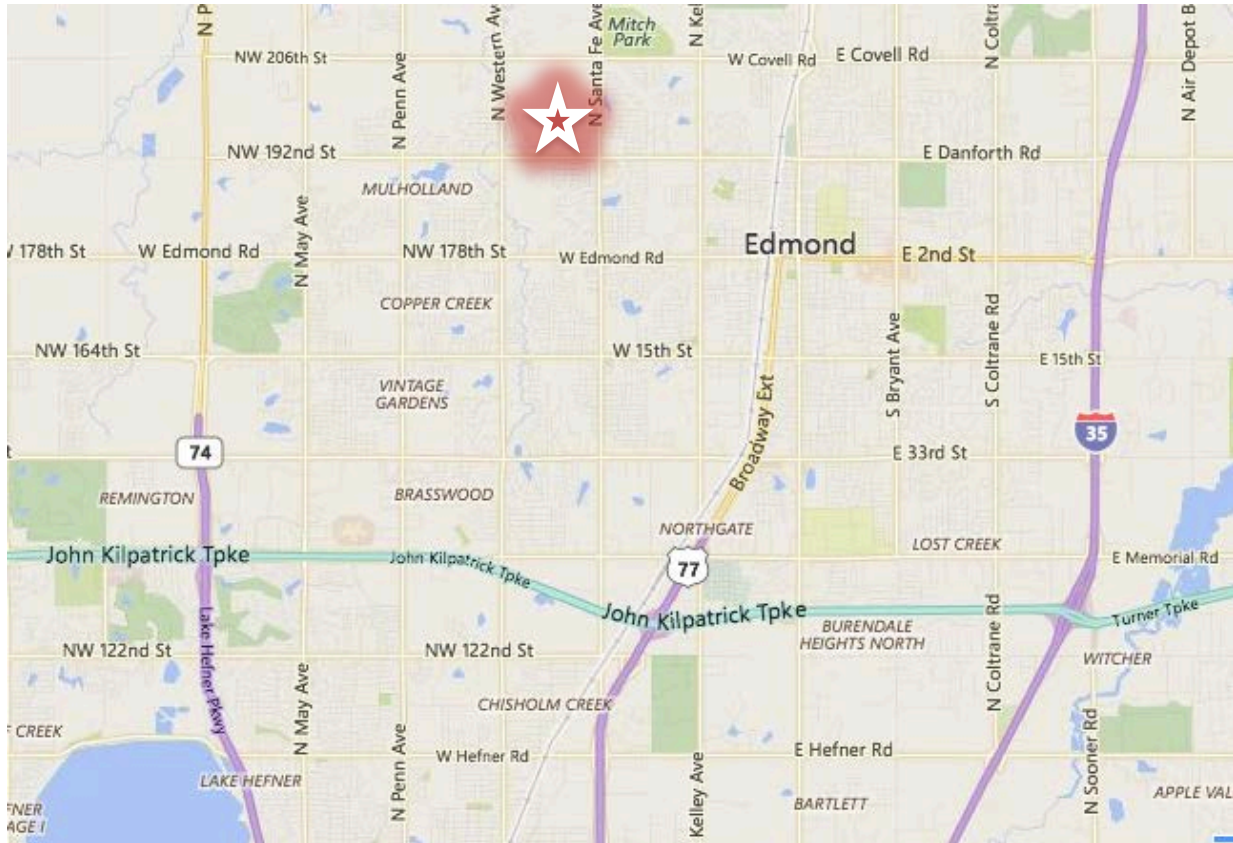
We look forward to seeing you here at Santa Fe in anticipation of witnessing how the Spirit will move us forward together as the Body of Christ, and for the Glory of God.

Your servant in Christ,  
Mitch Miller, Pastor



1603 N Santa Fe Avenue • Edmond OK 73003 • (405) 341-3300  
[www.santafechurch.org](http://www.santafechurch.org) [www.santafechurch.org](http://www.santafechurch.org)  
Reverend Mitchell Lee Miller, Pastor

Directions: Do you know the way to Santa Fe?



From the West: Take I-40 East to the John Kilpatrick Turnpike. Head North/East until Western Ave. Exit. Go north 4 miles on Western. Turn right (east) onto Danforth/192<sup>nd</sup>. Turn left (north) onto Santa Fe Ave. Church is on your left.

From the South West: Take I-44 North/East to Rt. 74 North. Turn East onto John Kilpatrick. Head East until Western Ave. Exit. Go north 4 miles on Western. Turn right (east) onto Danforth/192<sup>nd</sup>. Turn left (north) onto Santa Fe Ave. Church is on your left.

From South: Take I-35 North to I-235 (Broadway Ext.) North. Take exit for N. 122<sup>nd</sup> Street. Turn left (west) for a quarter mile. Turn Right (North) onto Santa Fe Ave. Go 5 and one third miles, church is on the left.

From South East: Take I-35 North to I-235 (Broadway Ext.) North. Take exit for N. 122<sup>nd</sup> Street. Turn left (west) for a quarter mile. Turn Right (North) onto Santa Fe Ave. Go 5 and one third miles, church is on the left.

From East: Take I-40 West to to I-235 (Broadway Ext.) North. Take exit for N. 122<sup>nd</sup> Street. Turn left (west) for a quarter mile. Turn Right (North) onto Santa Fe Ave. Go 5 and one third miles, church is on the left.

OR: Consult your favorite map program. Again the address is 1603 N. Santa Fe Ave., Edmond, OK 73003.



# Workshops @ INP



## Six Workshops to Equip You in Ministry

Friday, February 23, 2018 at Santa Fe Presbyterian Church in Edmond

All workshops are free and open to all! For more info: [www.okinp.org](http://www.okinp.org)

1:00 p.m. – Workshops I *(choose one to go to!)*

**Clerk of Session Resourcing** - led by Rev. Matt Meinke

**Youth Ministry for small to tiny youth groups** - led by Rev. Mitch Miller

**Finances for Small Churches** (great for treasurers & finance secretaries) - led by Becki Walden  
Finance Administrator at FPCOKC

2:00 p.m. – Workshops II *(choose one to go to!)*

**Introduction to the Insurance Board: How to Protect Your Ministry** - led by Jon Prange (Ins. Board)

**Leading the Sacraments** (great for CREs & Elders!) - led by Rev. Carl Bosteels & Matt Meinke

**Evangelism: Faith Sharing** – led by Rev. Ron Fike

*An expanded write up for some workshops below*

---

## Clerk of Session Resourcing

**led by Matt Meinke, Stated Clerk**

Great for seasoned clerks, new clerks of session, or those considering a clerk role. We will cover minute taking, rolls, registers, as well as the Annual Statistical Reporting. Resource sharing, collaboration, and online training will be a part of our time together. (1:00pm, 50 min.)

## Youth Ministry for Small to Tiny Youth Groups

**led by Mitch Miller, Pastor of Santa Fe Pres. Church, Edmond**

"But we don't have any youth," are words I hear all the time. In truth, this usually means we have between 1 and 5 or certainly less than 10 youth. If you have 1 to 10 or even more kids from 6-12 grades, you can have youth ministry.

Youth ministry can be successful regardless of the size. Well, there are solutions for these challenges. This workshop will give leaders a chance to discuss their challenges, find solutions, and find resources. (1:00pm, 50 min.)

## Finances for Small Churches

**led by Becki Walden, Finance Administrator at First Pres. Church, OKC**

This workshop is great for treasurers and finance secretaries of churches. We will explore topics like Accounting software options, How money is handled - who counts it and who deposits it, Safeguards throughout the year, Monthly reports, Contribution statements, Payroll - W-2's and 1099's, Deposits, Quarterly and Annual reports, Year-end financial review, Recordkeeping. (1:00pm, 50 min.)

## Leading the Sacraments

**Led by Carl Bosteels and Matt Meinke, ministers**

Intended for CREs and Elders who are called on to lead at communion and baptisms, but open to all, this workshop will cover historical underpinnings, the "how-to"s of leading at the table & font, sharing resources, and the importance of Eucharistic Visitation with homebound members. (2:00pm, 50 min)

## Evangelism: Faith Sharing

**Led by Ron Fike, Pastor of Covenant Pres. Church, OKC**

Evangelism is not as hard as we think. If you can talk about your life and tell your story, you can be an evangelist. At this workshop, we will. This workshop will provide you with a simple tool helping you to think about what God has done in your life. Then, we'll take turns telling the stories of God's power and greatness. You will hear stories that make you laugh. You will hear stories that make you cry. You'll be inspired by God. Join us Friday at 2:00. Come and be inspired. (2:00pm, 50 min.)

## INDIAN NATIONS PRESBYTERY DOCKET

STATED MEETING • February 23-24, 2018  
Santa Fe Presbyterian Church, Edmond, Oklahoma

### Pre-Meeting Workshops to Equip You in Ministry

*All workshops are free and open to all! For more info: [www.okinp.org](http://www.okinp.org)*

1:00 p.m. – Workshops I *(choose one to go to!)*

***Clerk of Session Resourcing*** - led by Rev. Matt Meinke

***Youth Ministry for small to tiny youth groups*** - led by Rev. Mitch Miller

***Finances for Small Churches*** (great for treasurers & finance secretaries) - led by Becki Walden  
Finance Administrator at FPCOKC

2:00 p.m. – Workshops II *(choose one to go to!)*

***Insurance Board Resources*** - led by Jon Prange from the Insurance Board

***Leading the Sacraments*** (great for CREs & Elders!) - led by Rev. Carl Bosteels & Matt Meinke

***Evangelism: Faith Sharing*** – led by Rev. Ron Fike

## DOCKET

### FRIDAY, February 23

Registration and check-in		12:30 p.m.
Workshops I		1:00 p.m.
Workshops II		2:00 p.m.
1. Call to order with prayer & declaration of a quorum	Ron Fike/ <b><i>Sanctuary</i></b>	3:30 p.m.
2. Welcome from the Host Pastor	Mitch Miller	
3. Opening Hymn		
4. Introduction of first time commissioners	Ron Fike	
5. Seating of corresponding members	Matt Meinke	
6. Approval of docket		
7. Approval of minutes of Oct 2017 stated meeting and Dec 2017 called meeting		
8. Stated Clerk Report	Matt Meinke	3:40 p.m.
Necrology		
Recognition of Ordination Anniversaries		

9.	Mission Strategy Group	Paul Kirbas	3:50 p.m.
10.	Personnel	Joe Meinhart	4:10 p.m.
	Reflection from the Font – Westlake, Bethany		4:15 p.m.
11.	Committee on Preparation for Ministry	Abbey Walker	4:25 p.m.
	Reflection from the Font – Earth Care Congregations	Deb Meinke, Cimarron Presbytery	4:40 p.m.
	Dinner (by the host church)		5:00 p.m.
13.	Transition Task Force Presentation during dinner	Scott White	5:45 p.m.
14.	Bible Study (led by the Transition Task Force)		6:00 p.m.
	Worship & Communion	Mitch Miller	7:00 p.m.
	Recess until Sat. morning		8:00 p.m.

#### **SATURDAY**

	Reconvene at 9:00am	Ron Fike/ <b>Sanctuary</b>	9:00 a.m.
	Morning Prayer	Carol Waters	
15.	Committee on Nominations	Melinda Clements	9:20 a.m.
16.	Committee on Ministry	Martin McNeese	9:25 a.m.
17.	Synod of the Sun Moderator Report	Shelley Hernandez, Synod Moderator	9:40 a.m.
18.	Synod Commissioner Report	Mitch Miller	9:45 a.m.
19.	Synod of the Sun Administrative Commission	Janice Six	9:50 a.m.
20.	Youth Ministries Committee	Jessica Dixon	9:55 a.m.
21.	Pastoral Care	Tracy Evans	
22.	Presbyterian Women	Janet Theus	10:00 a.m.
23.	INP Foundation Report	Russell Nelson	10:05 a.m.
24.	Administrative Commission to Colony/Cordell		10:15 a.m.
25.	Administrative Commission to Tecumseh	Jim Burns	10:20 a.m.
	Insurance Board Presentation	Jon Prange	10:30 a.m.
26.	Committee on Representation	Cornell Gallagher	
27.	Trustees' Report	Jim Bruce	10:45 a.m.
	Reflections from the Font – Solar Under the Sun	Melinda Hunt	10:55 a.m.
28.	Congregational Ministries	Amy Busse	11:10 a.m.

29. Budget and Finance	Jim Rogers	11:15 a.m.
30. Transition Task Force	Ron Fike	11:20 a.m.
31. New Business		11:50 a.m.
Announcements, Joys and Concerns		
32. Closing Hymn		
Adjourn with prayer	Ron Fike	12:00 p.m.



**FROM:** Stated Clerk  
**DATE:** February 2018  
**SUBJECT:** Report

---

**INFORMATION (and ACTION on #11)**

**1. The Presbytery: Composition and Responsibilities (G-3.0301)**

“The presbytery is the council serving as a corporate expression of the church within a certain district and is composed of all the congregations and teaching elders within that district. The presbytery shall adopt and communicate to the sessions a plan for determining how many ruling elders each session should elect as commissioners to presbytery, with a goal of numerical parity of teaching elders and ruling elders. This plan shall require each session to elect at least one commissioner and shall take into consideration the size of congregations as well as a method to fulfill the principles of participation and representation found in F-1.0403 and G-3.0103. Ruling elders elected as officers of the presbytery shall be enrolled as members during the period of their service. A presbytery may provide by its own rule for the enrollment of ruling elders serving as moderators of committees or commissions.

The minimum composition of a presbytery is ten duly constituted sessions and ten teaching elders.”

Based on year-end 2017 statistics as reported to the Stated Clerk of the General Assembly, ruling elder commissioners for Indian Nations Presbytery are as follows:

Churches with one commissioner (membership of 1-500)	48
Church with four commissioners (membership of 1501-2000)	
Westminster, OKC (1,691 members)	1 church for 4 commissioners
	Total: 52
Teaching elders on the roll (as of 12/31/17)	65
Less Non-Resident and Non Attending Honorably Retired Ministers	28
	Total: 37

There being a greater number of ruling elders than teaching elders represented above, there is no imbalance to redress.

**2. Permanent Judicial Commission Previous Members Roster**

According to D-5.0206b, *Book of Order*, Part II of the Constitution of the Presbyterian Church, U.S.A.: “The stated clerk of the council shall keep a current roster of those members of the permanent judicial commission whose terms have expired within the past six years. The names shall be arranged alphabetically within classes beginning with the most recent class. Whenever the permanent judicial commission reports its inability to obtain a quorum, the stated clerk shall immediately select, by rotation from that roster, a sufficient number of former members of the permanent judicial commission to constitute a quorum. The stated clerk shall report the roster annually to the council.”



***Roster of previous members:***

Class of 2017: Michael Anderson (TE), Tom Laubert (RE), Brian Upp (RE)

Class of 2015: Ken Blank (TE), John Saville (TE)

Class of 2013: Bob Harris (RE), Nancy Matthews (RE)

**3. Pastoral Receipts and Dismissals**

none

**4. Ordination/Installation/Administrative Commission Minutes**

The minutes of the Administrative Commission to install LaVonne Alexander as pastor of Columbian Memorial Presbyterian Church, Colony on January 28, 2018 were reported.

Present: Moderator Ron Fike (TE); Carol Waters (TE); Matt Meinke (TE); Keith Weichel (RE) (Columbian Memorial, Colony); Martin McNeese (RE) (Santa Fe, Edmond). The

commission convened with prayer at 3:45pm on Sunday January 28, 2018 in the office of the church. A quorum was present. The commission voted to proceed with the installation, and also voted that the service of worship be the concluding prayer for this meeting of the commission and that the conclusion of the worship service shall constitute completion of the presbytery's charge to the commission. Attest: Elder Ron Fike

**5. Letters of Resignation from Committee Members/Task Force Members**

Received letters from: Nancy Matthews resigning from Congregational Nurture Committee, from Roger Hartman resigning from Mission Strategy Group, Allison Rogers and John Helgeson resigning from COM, and from Ron Fike resigning from the Transition Task Force.

**6. Thank You**

A thank you letter was sent to Westminster, OKC for hosting the called presbytery meeting in December.

**7. Correspondence**

To and From the Secretary of State of Oklahoma: there have been numerous correspondence related to the deed of property formerly known as Calvin Presbyterian Church, Oklahoma City, the entity formerly known as the Presbytery of Washita, and Merger documents processed for the Secretary of State of Oklahoma. The Trustees and I believe this matter is coming to a close. Thank you to Richard Riggs (First, OKC) for his help in us moving toward a clean deed.

From the Oklahoma Conference of Churches: I routinely get thanks for our benevolence to the OCC. Also we received correspondence of the upcoming retirement of Dr. Bill Tabbernee on March 31, 2018.

From the Santa Fe Presbyterian Church, Edmond: informing the presbytery of Jan Ingerson's retirement. Her commission as CRE at Santa Fe Presbyterian Church in Edmond has come to an end.

**8. Clerk of Session Training**

If you are new to being a clerk, and are unable to come to the pre-meeting Workshop for clerks, and are still needing assistance, I am available for one-on-one training any time. Call to schedule an appointment.

**9. New Session Minute Reporting in 2018**

Just another reminder that with recent changes in the Book of Order, Sessions were asked to adopt and implement a Sexual Misconduct policy and Child protection policy. That, and many other requirements as well as feedback and suggestions from other Stated Clerks, has led to a **reconfiguration of our Session Minute reporting mechanism**. The fillable forms are found at [www.okinp.org/ClerksCorner](http://www.okinp.org/ClerksCorner)

**10. Dissolution**

By previous action in 2017, Indian Nations Presbytery dissolved First Presbyterian Church in Tecumseh, and that has been reported to GA.

**11. For ACTION: Motion to Amend Previously Approved Minutes**

At the April 25, 2017 called meeting of Presbytery, the following appears in the minutes:

**Motion adopted that the Presbytery approve the sale of the south parking lot of Westminster Presbyterian Church of Oklahoma City to the Westminster School for \$550,000.**

After consultation with Westminster Presbyterian Church in Oklahoma City, and WPCOKC member David Morgan who is working with the legal documents, I propose the following clarification, and MOVE that we amend the previously approved minutes to:

**Motion adopted that the Presbytery approve the sale of the south parking lot of Westminster Presbyterian Church of Oklahoma City, including the house immediately to the east of said south parking lot, known as the SPARK House, to the Westminster School for \$550,000.**

**12. Necrology Report – see 8b**

**13. Celebration of Ordination Dates – see 8c**

**2017 Necrology – Ruling Elders**

<b>NAME</b>	<b>DATE OF DEATH</b>	<b>CHURCH</b>	<b>CITY</b>
Dr. JoAnn Carpenter	May 23, 2017	First Presbyterian Church	Ada
Byron Schaff	February 14, 2017	First Presbyterian Church	Ardmore
Evelyn Gant	March 9, 2017	First Presbyterian Church	Ardmore
Bob Kerr	May 21, 2017	First Presbyterian Church	Ardmore
Nora Harris	July 1, 2017	First Presbyterian Church	Ardmore
Bill McQuain	October 4, 2017	First Presbyterian Church	Duncan
Charlotte Utley	December 12, 2017	First Presbyterian Church	Duncan
Beverly Brock	August 9, 2017	First Presbyterian Church	Lawton
William (Pat) Hunt	August 6, 2017	Westminster Presbyterian Church	Lawton
Marcia Goodman	April 20, 2017	First Presbyterian Church	Norman
Patsy Klingstedt	June 21, 2017	First Presbyterian Church	Norman
William H. (Bill) Jordan	August 29, 2017	First Presbyterian Church	Norman
James C. Elder	October 13, 2017	First Presbyterian Church	Norman
Jonathan Randolph (Randy) White	December 31, 2017	First Presbyterian Church	Norman
Dave Iske	July 19, 2017	Memorial Presbyterian Church	Norman
Newt Johnston	March 11, 2017	Central Presbyterian Church	Oklahoma City
Lou Davidson	November 6, 2017	Central Presbyterian Church	Oklahoma City
Richard Kamp	March 16, 2017	Covenant Presbyterian Church	Oklahoma City
Jean Chandler	November 24, 2017	Covenant Presbyterian Church	Oklahoma City
William Tompkins	December 13, 2017	Covenant Presbyterian Church	Oklahoma City
Mary Louise Thomas	March 12, 2017	First Presbyterian Church	Oklahoma City
Jody Kerr	August 24, 2017	First Presbyterian Church	Oklahoma City
John Dougherty	September 3, 2017	First Presbyterian Church	Oklahoma City
Jean Stockham	September 15, 2017	First Presbyterian Church	Oklahoma City
Waylon Ables	September 5, 2017	Trinity Presbyterian Church	Oklahoma City
Henry Franklin Coffeen, Jr.	July 13, 2017	Westminster Presbyterian Church	Oklahoma City
Myra Robberson Delhotal	October 27, 2017	Westminster Presbyterian Church	Oklahoma City
George Meisel	February 16, 2017	First Presbyterian Church	Pauls Valley
John Burns	May 6, 2017	First Presbyterian Church	Pauls Valley
Henry Saunder	May 13, 2017	First Presbyterian Church	Pauls Valley
William A Weaver	February 25, 2017	United Presbyterian Church	Shawnee
Mary Elizabeth (Lazenby) Spaulding	June 1, 2017	United Presbyterian Church	Shawnee
Osyth Louise (Moore) Downing	June 25, 2017	United Presbyterian Church	Shawnee

## Recognition of Ordination Anniversaries

**February 24, 2018**

YEARS	DATE		
5	2013	Walker, Abbey	1/26/13
10	2008	Amen, Greg Long, Sue	7/6/08 12/15/08
15	2003	Carr, William	7/13/03
20	1998	Fike, Ron Rucker, Vicki	6/28/98 11/29/98
25	1993		
30	1988		
35	1983	Clements, Melinda	10/9/83
40	1978	Meinhart, Joe	6/25/78
45	1973	Friedel, Harvey	9/9/73
50	1968	Goodman, Lois	6/16/68
55	1963	Anderson, Michael	2/24/63
60	1958	Delgado, Roberto	12/21/58
65	1953	Bergstresser, Gene	7/31/53
70	1948		

## The Mission Strategy Group Presbytery Report

The MSG continues to hold monthly meetings. The following items are reported, grouped as information items, followed by motions needing Presbytery vote.

### Items for Information:

1. As requested by the Presbytery meeting of October, 2017, we conducted an extensive review of the reserved funds of Indian Nations Presbytery. The results show that most of our reserved funds were designated at the time of their creation, and are not available for the operational budget expenses.
2. The MSG approved a proposal for a new copier for the Presbytery office, presented by Summit Business Systems.
3. As requested by the Presbytery meeting of October, 2017, the MSG, in conversation with the Personnel Committee, discussed the recommendation of a salary increase for the Acting Clerk's position. In beginning this conversation, we recognized that the one-year term that was in place for the Acting Clerk's position has expired, and that a new action is required to extend or replace the existing position. The MSG referred this back to the Personnel Committee, asking that the Personnel Committee justify the increase of hours and salary for the clerk, and to present a motion addressing the expired acting clerk position.
4. The MSG received a request from the Nominating Committee to consider consolidating particular committees to streamline the Presbytery's work and to help find enough people to serve on our committees. This is going to be addressed by the Transition Team process in the near future.
5. The MSG approved the sale of property by Connecting Point Presbyterian Church to Paycom. The matter is referred to the Trustees Committee for their concurrence.

### Items for Presbytery Action:

1. The MSG moves that the Standing Rules be amended to decrease the membership of the Committee on the Preparation for Ministry (CPM) from 9 to 6 members, 1 member reduced for each class. This was an action recommended to the MSG by the Nominating Committee.

2. The MSG moves appointing Mitch Miller to serve one more year as synod commissioner in keeping with the synod's recommendation that commissioners serve a 3 year term. This was an action recommended to the MSG by the Nominating Committee.
3. The MSG moves that the Presbytery accept the invitation from the First Presbyterian Church of Ada to host the October 2018 presbytery meeting.

**FROM:** Committee on Nominations

**DATE:** February 23, 2018

**SUBJECT:** Recommendation

**RECOMMENDATION**

That presbytery elect the following persons to the positions indicated:

**Budget & Finance** **Class**

Donna Kiplinger 2020

**Committee on Ministry** **Class**

\*Rick Baggett 2018

Charlotte Lovett 2018

\*Jennifer Kirbas 2020

**Committee on Representation**

Ted Tiger, Jr. 2020

\*Jan Burns-Hintze 2020

**Mission Strategy Group** **Class**

\*Bill Galbraith 2019

Huretta Dobbs 2020

Delores Strider 2020

**Committee on Preparation for Ministry** **Class**

Craig Stanley 2020



**Personnel**

\*Bill Galbraith

**Class**

2019

Barbara Charlet

2020

**G.A.**

**Class**

Charlotte Lovett, RE alt.

2018

**Dwight Mission**

David Sergent

2020

## Presbytery Committees/Commissions

### Budget and Finance Committee

Develops the annual budget in consultation with appropriate committees and structures of the presbytery and presents the budget for MSG review and presbytery approval at the October stated meeting. Recommends budget adjustments as needed. Oversees financial operations of the presbytery, reviews financial statements and selected transactions, advises MSG and presbytery on financial matters and recommends policies as needed. Five (5) members.

### Committee on Congregational Ministries

Works with congregational clusters and cluster leadership by providing resources for new church development and transformation of existing congregations; discipleship; church administration; missional considerations; stewardship. Nine (9) members chosen at-large.

### Committee on Ministry (COM)

Works with congregations and pastors regarding the relationship between pastors and congregations. It does so by regular visits, meeting with pastor nominating committees, counseling with congregations and pastors, as needed. It approves the call extended to pastors. It may provide mediation and help congregations and pastors reconcile when difficulties arise. There are eighteen (18) members on the committee evenly divided between ministers and ruling elders.

### Committee on Nominations

Encourages and presents nominees for elected office on various presbytery committees, permanent judicial commission, and commissioners to other councils. Six (6) members.

### Committee on Pastoral Care

Cooperates with COM and presbytery leadership to address pastoral care issues for pastors, certified Christian educators, commissioned ruling elders and their families. Six (6) members, at least two (2) shall be teaching elders.

### Committee on Preparation for Ministry

Implements the care and oversight process for inquirers and candidates for ministry as detailed in the Book of Order and the committee handbook. There are nine (9) members on the committee. At least four (4) members shall be ministers and at least four (4) members shall be ruling elders.

### Committee on Personnel

Implements personnel policies and procedures and reports to MSG and presbytery, as needed. Six (6) members chosen at-large.

**Board of Trustees**

Deals with all property matters requiring presbytery action under the Constitution. May also consult with particular congregations on such matters as insurance and risk management. Three (3) members, including at least one (1) minister and one (1) ruling elder.

**Committee on Representation**

Reviews nominations, consults with nominating committee and reports annually to the presbytery regarding the representation of teaching elders and ruling elders on presbytery committees. Six (6) members.

**Mission Strategy Group**

MSG develops the strategy for the mission of Christ within the presbytery's geographic area and recommends to presbytery mission in light of the larger strategy of the synod and the General Assembly. It builds relationships with synod, General Assembly and ecumenical partners to enhance the mission of the presbytery. At times, it coordinates its work with the Budget and Finance committee regarding non budgeted expenditures for the presbytery. MSG works with congregations to assist them as they seek funding for their mission work; to take actions regarding congregational property. It directs the work of the presbytery personnel; nominates persons to serve on the Nominating Committee; works on the docket for presbytery meetings and recommends locations for presbytery meetings; reviews standing rules, manuals and policies of the presbytery; approves contracts for audits and financial reviews; provides for the maintenance of presbytery office, furnishings, and equipment.

**Permanent Judicial Commission**

May be called upon to try a case within the presbytery. Only has the powers prescribed by and conducts its proceedings according to the Constitution of the PCUSA.

**Youth Ministry Committee**

Works to provide missional, spiritual and educational opportunities for the youth of the presbytery.

**Indian Nations Presbytery Foundation**

Exists to raise money above the normal budgetary process to meet future needs of the presbytery. Acquires, receives, holds and manages the property and funds of the presbytery which may be committed to it; conducts a program of developing new resources for the presbytery and congregations.



# Rejoice!

Synod Sunday  
*August 26, 2018*

Isaiah 43:19



---

## IMAGINE: Mission Connection



---

Thomas Riggs named Communications & Administration Coordinator



---

## New Mailing Address –

The new mailing address as of January 1<sup>st</sup> is:  
445 E. FM 1382 Ste. 3-778, Cedar Hill, TX 75104





SAVE THE DATE

Clergy, Commissioned Pastors, Christian Educators

# PASTORAL LEADERS RETREAT

---

October 29-30

St. Crispin's Conference  
Center



SAVE THE DATE

Clergy, Commissioned Pastors, Christian Educators

# PASTORAL LEADERS RETREAT

---

October 29-30

St. Crispin's Conference  
Center

**FROM:** Indian Nations Presbytery Foundation  
**DATE:** February 7, 2018  
**SUBJECT:** Information

---

The Indian Nations Foundation Board of Directors met on Thursday, January 11, 2018, to discuss current status. A letter from Russell Nelson, President, and a copy of the INP Foundation Grant Application packet was sent to all churches advising that funds are available for grants and requests should be received no later than March 1, 2018.

The current Foundation balance on December 31, 2017 was \$29,225.84.

The Foundation Bylaws were reviewed and changes were made to reflect the changes in the presbytery.

Julie Strong was elected INP Foundation Treasurer.



## **Administrative Commission Final Report on the Merger of First Presbyterian Church, Cordell with Columbian Memorial Presbyterian Church, Colony**

In December 2016, the session of First Presbyterian Church, Cordell met and after discussion voted to cease services as a congregation with the final worship service of that congregation to be held on Sunday, October 1, 2017.

The sessions of First Presbyterian Church, Cordell and Columbian Memorial Presbyterian Church, Colony, met along with COM liaison, Harry Wright, on February 8, 2017 to discuss, and agree upon, the merger of the two congregations.

It was agreed that First Presbyterian would hold a congregation meeting to vote on the merger on March 12, 2017, and Columbian Memorial would hold their congregational meeting on March 19, 2017 to vote on the same.

After each congregation had approved the merge, the two sessions would then work out the details of merger including the pastor's contract, membership lists, real estate and other property.

Each congregation held their meetings as planned, and the merger was unanimously approved by both.

At the COM meeting on April 4, 2017 it was voted to appoint an Administrative Commission to oversee the merger. Those selected as members of the AC were John Helgeson, Chair, David DeLana, Glenn Dunn, Brenna Huntley, and Pam Normile.

The first meeting of the AC and elders from both church sessions was held on May 24, 2017 at the Colony church.

Those present were: James Gee, Doug Misak, Rick Morris, Jeremy Weichel, Keith Weichel and Lonnie Yearwood (Colony); Mark Wesner, Rick Lindley, Karen Pankratz, Sarah Ivy and Jan Gibley (Cordell); and Chairman John Helgeson, Glenn Dunn, David DeLana, Pam Normile, and Brenna Huntley (AC). Rev. Alexander was also present.

The meeting was opened with prayer by Chairman John Helgeson.

Chairman Helgeson moderated the meeting and stated the purpose of the meeting was to begin the process of merging Columbian Memorial Presbyterian Church, Colony, Oklahoma and First Presbyterian Church, Cordell, Oklahoma. He informed the two sessions that the primary purpose of the Administrative Commission was to provide general assistance and advice on matters pertaining to the governance of Indian Nations Presbytery. He stated the merger consisted of three major areas: 1) transfer of membership, 2) finances, and 3) real estate and personal property. He requested the clerk of session of both churches prepare various documents including membership lists, property inventory lists, and appraisals.

It was agreed that the next meeting of all parties would be held in July, 2017.

On August 23, 2017 the combined sessions of both churches met with members of the AC in the fellowship hall of First Presbyterian Church, Cordell. Those present were: James Gee, Gayle Harris, Doug Misak, Jeremy Weichel, and Keith Weichel (Colony); Mark Wesner, Rick Lindley, Karen Pankratz, Sarah Ivy, Katie Kastner, Jan Gibley, and Phil Kliewer (Cordell), and John Helgeson, Glenn Dunn, and Brenna Huntley (AC). Rev. Alexander was also present.

The meeting was opened with prayer by Chairman John Helgeson.

A congregational meeting was scheduled for August 27, 2017 for the Cordell congregation to vote on the transfer of property to the Colony church. In addition, the Administrative commission voted to approve the transfer. These actions are necessary before the Indian Nations Presbytery Board of Trustees can give final approval on the transfer of real estate and mineral rights. The Administrative Commission also voted to allow the Cordell church to sell any surplus assets. These assets might include any property not included in the sale of the church building or requested by the Colony church. A list of all properties is attached at the end of this report. The deeds were dated September 27, 2017.

The Cordell church voted to transfer its membership rolls to the Colony church, effective October 2, 2017. The Administrative Commission voted to approve the Cordell action regarding this membership transfer. Those who will have their membership transferred to Columbian Memorial are: Nancy Ackerson, Jarrod Denton, Allen Gibley, Jan Gibley, Sarah Ivy, Katie Kastner, Phil Kliewer, Rick Lindley, Sue Lindley, Earlena Shannon, Don Shannon, Kristy Sherwood, and Mark Wesner. They were notified by letter of this action on October 10, 2017.

The session of the Columbian Memorial Presbyterian Church, Colony, Oklahoma, met in a church classroom at 6:00 p.m. on October 11, 2017.

Elders present: Gayle Harris, James Gee, Jeremy Weichel, Lonnie Yearwood and Rick Morris.

Elder absent: Doug Misak

Also present: Moderator Rev LaVonne Alexander and Clerk of Session Keith Weichel.

The meeting was opened with prayer by Rev. Alexander.

Clerk of Session, Keith Weichel, gave a brief report about church property acquired during the merger with First Presbyterian Church (FPC), Cordell, Oklahoma. Clerk Weichel reported the church building was appraised for approximately \$220,000. There is a current outstanding claim for storm damage to the roof of the facility for about \$90,000. FPC received an initial payment for damages, with the balance paid upon completion of the repairs. Insurance coverage was purchased from the Allen Gibley Insurance Agency in Cordell.

On October 1, 2017 the elders of FPC Cordell, met to make decisions regarding the distribution of funds held by that congregation. The funds were distributed as follows: \$25,000 to Cordell Animal Shelter Project, \$10,000 to Judah House and \$5,000 to Presbyterian Disaster Assistance, and \$56,000 to Columbian Memorial Presbyterian Church.

On October 18, 2017, the session of the Columbian Memorial Presbyterian Church, Colony, held a special Called Meeting with the Administrative Commission.

Columbian Elders present: Gayle Harris, James Gee, Jeremy Weichel, Rick Morris and Lonnie Yearwood; Cordell elders present: Rick Lindley, and Mark Wesner; AC members present: Chairman John Helgeson, Glenn Dunn, and Brenna Huntley. Also present: Rev. LaVonne Alexander and Clerk of Session Keith Weichel (Colony).

The meeting was opened with prayer by Chairman John Helgeson.

Chairman Helgeson moderated the meeting.

Chairman Helgeson discussed the October 1<sup>st</sup> meeting of the elders of First Presbyterian Church, Cordell. Rev. Alexander stated she was not present at the meeting. Chairman Helgeson stated that without a moderator present, actions taken during the meeting by First Presbyterian Church Session were not official. First Presbyterian Church Clerk of Session, Mark Wesner, apologized for any misunderstanding regarding the distribution of these funds. Chairman Helgeson asked for a motion for Columbian Memorial, Colony to retroactively approve this disbursement. The elders declined to do so.

However, it was voted that Columbian Memorial recognized distributions made by First Presbyterian Church. The Administrative Commission voted to approve this action.

It was further agreed that any previous requests made by FPC Cordell with respect to the distribution of proceeds from a sale of the church building were not official or in any way binding, and that all proceeds from such a sale would be at the discretion of Columbian Memorial Presbyterian Church Session with Presbytery approval.

The Administrative Commission voted the Session of First Presbyterian Church be dissolved.

Chairman Helgeson asked the Session of Columbian Memorial Presbyterian Church if there were any unresolved matters regarding the merger of the churches. There were none. The members of the Administrative Commission voted to dissolve the Administrative Commission.

At the November 8, 2017 meeting of the session of Columbian Memorial, Colony, Clerk Weichel informed the Session about the status of changing the signatures on the church's bank accounts. Treasurer Jerry Weichel has been added to the checking account acquired from First Presbyterian Church. Treasure-elect Tori Gee will schedule an appointment to add her name to the account, as well as, all of the church's existing accounts.

It was voted that Clerk Weichel begin the process of selling the Cordell church building. Clerk Weichel stated he had contacted appraiser Jerry Burrows to complete an appraisal. Work on the building's new roof is near completion.

At the December 13, 2017 session meeting of Columbian Memorial, Colony, Clerk Weichel informed the Session the new appraisal of the Cordell church building was \$255,000. Clerk Weichel will contact real estate agents to determine how to proceed selling the property.

Submitted January 16, 2018 by John Helgeson, Chair of the Administrative Commission, on behalf of AC members: David Delana, Glenn Dunn, Brenna Huntley, and Pam Normile

PROPERTY LIST  
OF FIRST PRESBYTERIAN CHURCH  
CORDELL, OKLAHOMA

**MINERAL INTEREST**

**Canadian County**

1. 10 Mineral Acres in and under the Southwest Quarter (SW/4) of Section 20, Township 12 North, Range 10, W.I.M., Canadian County, Oklahoma
2. An undivided 1/24<sup>th</sup> interest in and to an undivided One Half (1/2) mineral interest under Lots 1 and 2 and the South Half of the Northeast Quarter (S/2 NE/4) of Section 6, Township 11 North, Range 10, W.I.M., Canadian County, Oklahoma
3. An undivided 1/24<sup>th</sup> interest in and to an undivided 1/4<sup>th</sup> mineral interest under the Southwest Quarter (SW/4), Section 20, Township 12 North, Range 10, W.I.M., Canadian County, Oklahoma

**Washita County**

4. 1/128<sup>th</sup> interest in and under the Northeast Quarter (NE/4), Section 30, Township 9, Range 20, W.I.M., Washita County, Oklahoma
5. 1/128<sup>th</sup> interest in and under the Southeast Quarter (SE/4) of Section 7, Township 8 North, Range 16, W.I.M., Washita County, Oklahoma
6. 2.75/320<sup>th</sup> interest in and under the Northeast Quarter (NE/4) and the East Half of the Southwest Quarter (E/2 SW/4) and the West Half of the Southeast Quarter (W/2 SE/4) of Section 7, Township 9 North, Range 20, Washita County, Oklahoma
7. .25 mineral acre in and under the North Half (N/2) of the Northeast Quarter (N/2 NE/4), Section 22, Township 9, Range 17, Washita County, Oklahoma

**Payne County**

8. .6665 mineral acres in and under a tract of land described as beginning at the Northeast (NE) corner of the North Half of the Northeast Quarter (N/2 NE/4) of Section 8, Township 18, Range 1, E.I.M.; thence the West 32 Rods; South 80 Rods; East 32 Rods; North 80 Rods to P.O.B.,

Payne County, Oklahoma

## REAL ESTATE

I-2017-003192 Book 1341 Pg: 357  
10/03/2017 1:38 pm Page(s) 0354-0357  
Fee: \$ 19.00 Doc: \$ 0.00  
Kristen Dowell - Washita County Clerk  
State of Oklahoma

## Washita County

1. Lots 1, 22, 23, 24 in Block 38, all in the Original Town of New Cordell, Oklahoma  
**Church and Annex**
2. Lots 20 and 21 in Block 38 of the Original Town of New Cordell, Oklahoma  
**Church and Annex**
3. Lots 2 and 3 in Block 38, New Cordell, Oklahoma
4. The North 13.2 feet of Lot 2 and the South 61.8 feet of Lot 3 in Block 8, Marley Estates  
Addition to the City of New Cordell, Oklahoma  
**1604 Crestview Drive (MANSE)**